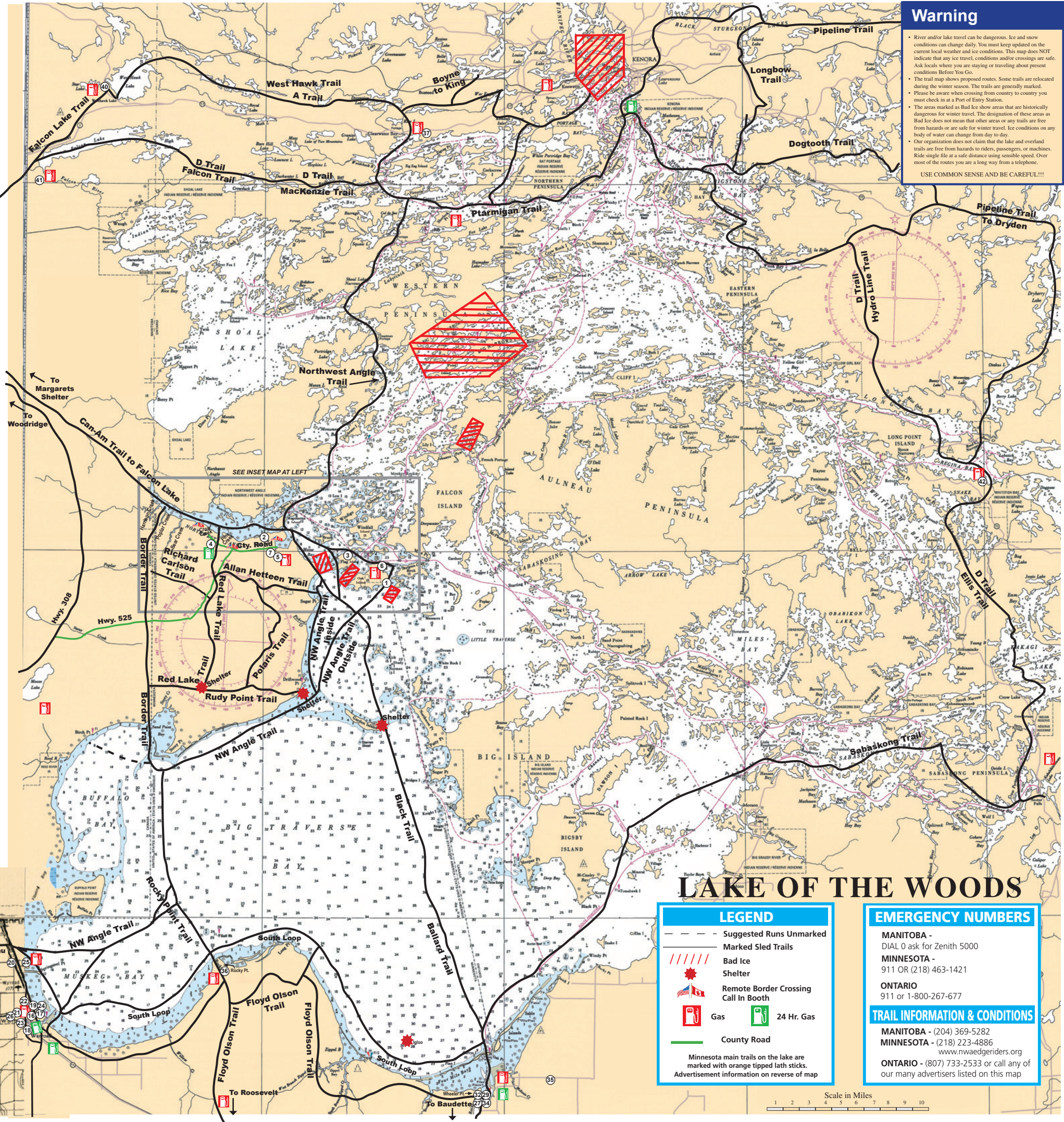
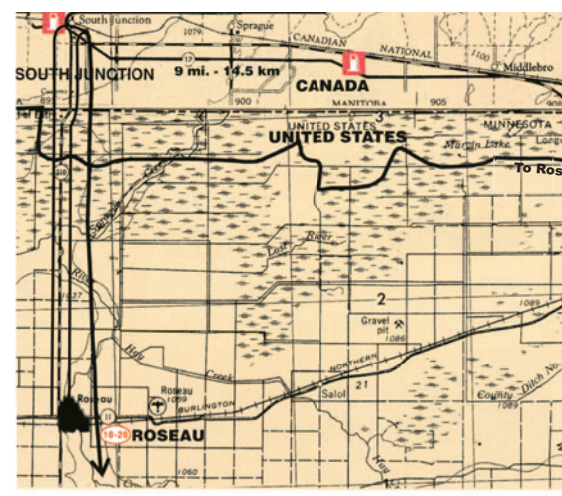
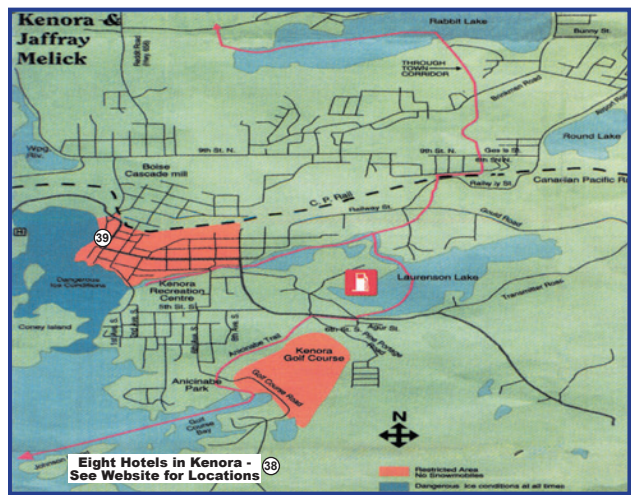
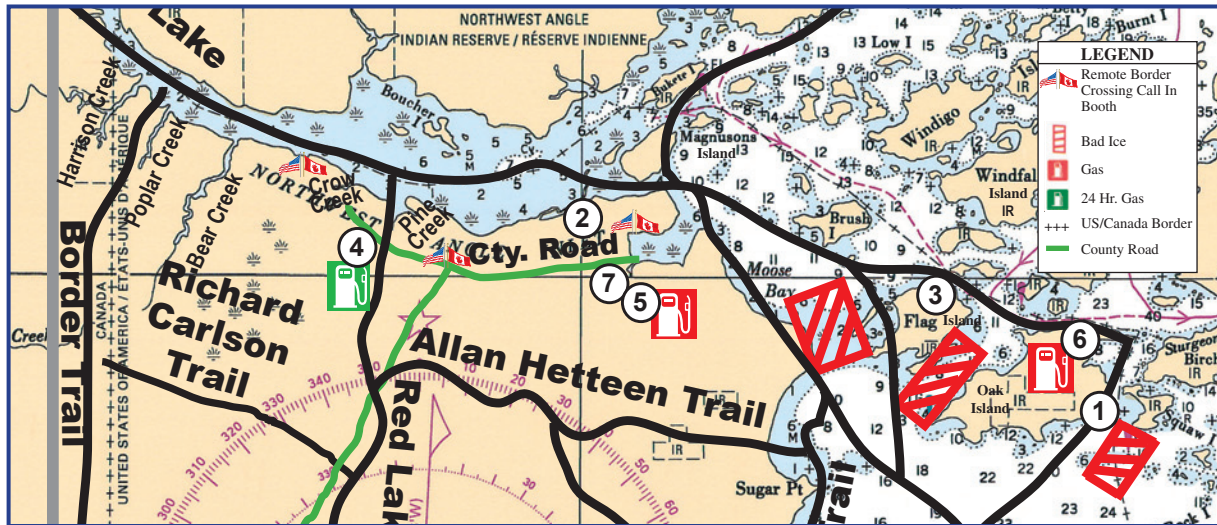


Advertiser Legend

Northwest Angle and Islands		Roosevelt	
1	Angle Inn Lodge	20	Johnston Concrete
2	Angle Outpost Resort/Red Fox Ice Fishing	36	Rock Harbor Lodge-Amesen's Rocky Point
3	Flag Island Resort	21	Lake Country Chevrolet
4	J&M Co. General Store	22	Marvin Home Center
5	Jerry's Restaurant & Lounge	23	Riverside Bait & Tackle
	Northwest Angle Edge Riders	24	Security State Bank
	Northwest Angle and Islands Chamber of Commerce	25	Springsteel Resort
6	Sportsman's Oak Island Lodge	26	Subway
7	Young's Bay Resort		Warroad Chamber of Commerce
Roseau		Baudette	
8	Agassiz Insurance Group	27	Ballards Resort
9	AmericInn Lodge & Suites	28	Border State Bank
10	Border State Bank	29	Border View Lodge
11	D&E Sports Shop Inc.	30	Cenex - Farmers Union Oil Co.
12	Doug's Supermarket		Lake of the Woods Drifters Snowmobile Club
13	Expressions		Lake of the Woods Tourism
14	KJ Wild 102	31	Northern Sports & Machine
15	KRWB Classic Rock 1410 AM	32	River Bend Resort
16	Polaris	33	Rosalie's Restaurant & Lounge
	Roseau County Trailblazers	34	Sportsman's Lodge Rainy River
	Roseau Electric Cooperative, Inc.	35	Walleye Inn
Warroad		MILEAGE	
17	Agassiz Insurance Group	Starting From	Destination
18	American Family Insurance - Dave Gray Agency	Roseau, MN	Warroad, MN
19	Cenex - Farmers Union Oil Co.	Warroad, MN	Wheeler Point
	Doug's Supermarket	Wheeler Point	Baudette, MN
		Wheeler Point	Youngs Bay NW Angle
		Warroad, MN	Youngs Bay NW Angle
		Youngs Bay NW Angle	Kenora, Ontario
		Kenora, Ontario	Sioux Narrows, Ontario
		Sioux Narrows, Ontario	Nestor Falls, Ontario
		Sioux Narrows, Ontario	



Warning

- River and/or lake travel can be dangerous. Ice and snow conditions can change daily. You must keep updated on the current local weather and ice conditions. This map does NOT indicate that any ice travel, conditions and/or crossings are safe. Ask locals where you are staying or traveling about present conditions before you go.
- The trail map shows proposed routes. Some trails are relocated during the winter season. The trails are generally marked.
- Please be aware when crossing from country to country you must check in at a Port of Entry Station.
- The areas marked as Bad Ice show areas that are historically dangerous for winter travel. The designation of these areas as Bad Ice does not mean that other areas or any trails are free from hazards or are safe for winter travel. Ice conditions on any body of water can change from day to day.
- Our organization does not claim that the lake and overland trails are free from hazards to riders, passengers, or machines. Ride single file at a safe distance using sensible speed. Over most of the routes you are a long way from a telephone.

USE COMMON SENSE AND BE CAREFUL!!!

LAKE OF THE WOODS

LEGEND

- Suggested Runs Unmarked
- Marked Sled Trails
- Bad Ice
- Shelter
- Remote Border Crossing Call In Booth
- Gas
- 24 Hr. Gas
- County Road

Minnesota main trails on the lake are marked with orange tipped lath sticks. Advertisement information on reverse of map.

EMERGENCY NUMBERS

MANITOBA - DIAL 0 ask for Zenith 5000
 MINNESOTA - 911 OR (218) 463-1421
 ONTARIO - 911 or 1-800-267-677

TRAIL INFORMATION & CONDITIONS

MANITOBA - (204) 369-5282
 MINNESOTA - (218) 223-4886 www.mwaedgeriders.org
 ONTARIO - (807) 733-2533 or call any of our many advertisers listed on this map

Scale in Miles
 1 2 3 4 5 6 7 8 9 10